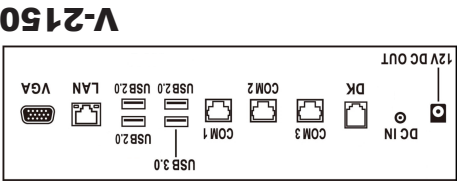
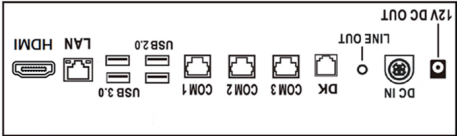
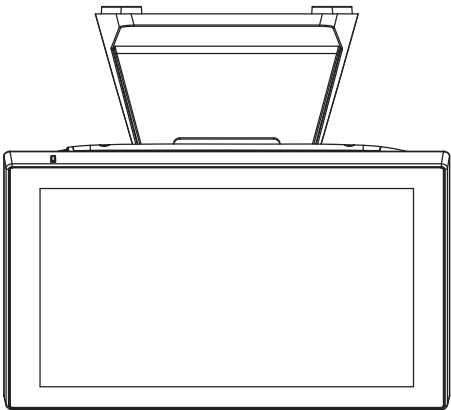




Viva Series

Quick Installation Guide

Overview



V-2150E

V-2150

Package Contents

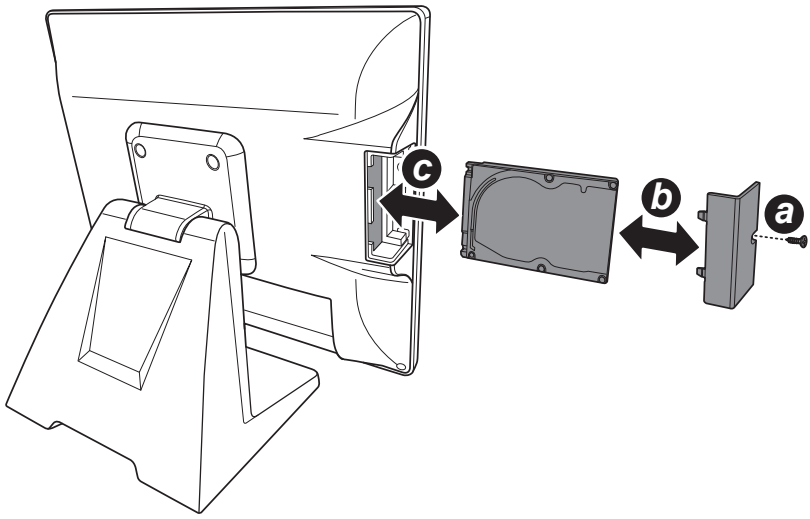
Before setting up your Touch Terminal, check that the package contains the following items. If any of the items is missing or damaged, contact your vendor immediately.

Touch Terminal	Power Cord & Adapter	Accessory Kit
Customer Display (VFD)	Secondary LCD Display (10")	MSR Reader
MSR + Button Identification Reader	MSR + RFID Identification Reader	

- Before getting started, read these instructions and save them for later reference.
- Turn off the POS Terminal before cleaning. Clean with dry cloth only. Do not spray any liquid cleaner directly on the screen.
- The power outlet socket used to plug in power cord must be located near the system and easily accessible.
- Make sure the voltage of the power source is set correctly before connecting the POS Terminal to power outlet.
- If the POS Terminal shares an extension cord with other devices, make sure the total loading of the devices plugged into the extension cord does not exceed the extension cord's maximum loading.
- Do not expose the power cord, extension cord and power outlet to moisture or traffic intensive walkways.
- Install the POS Terminal on a sturdy and reliable surface to prevent damage caused by dropping.
- The operating system must be first loaded before installing any software into the POS Terminal.
- Disconnect the power cord from the POS terminal before any installation of internal components. Make sure both the POS terminal and the external devices are turned off. A sudden surge of power may damage sensitive components. Also make sure the POS terminal is properly grounded.
- During installation of any internal components, be sure to ground yourself and discharge any static electricity. Most electronic components are highly sensitive to static electric charge. Use a grounding wrist strap and place all electronic components in any static-shielded devices. If a wrist-grounding strap is not available, ground yourself by touching an unpainted piece of metal.
- The brightness of the flat panel display will decrease after using over long periods of time. However, hours of use will vary depending on the application environment.
- When maintenance of the POS Terminal, make sure the LCD panel is properly and securely installed.

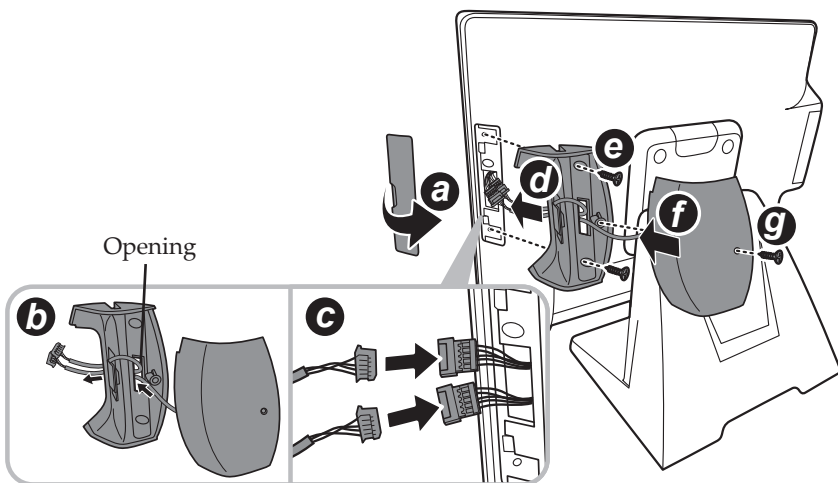
Installing / Replacing the Storage

1. Remove the screw from the storage compartment cover. (a)
2. Remove the storage compartment cover. (b)
3. Install the storage into its compartment in the Touch Terminal, making sure the connectors are aligned correctly. (c)
4. Replace the storage compartment cover (b) and secure with the screw. (a)



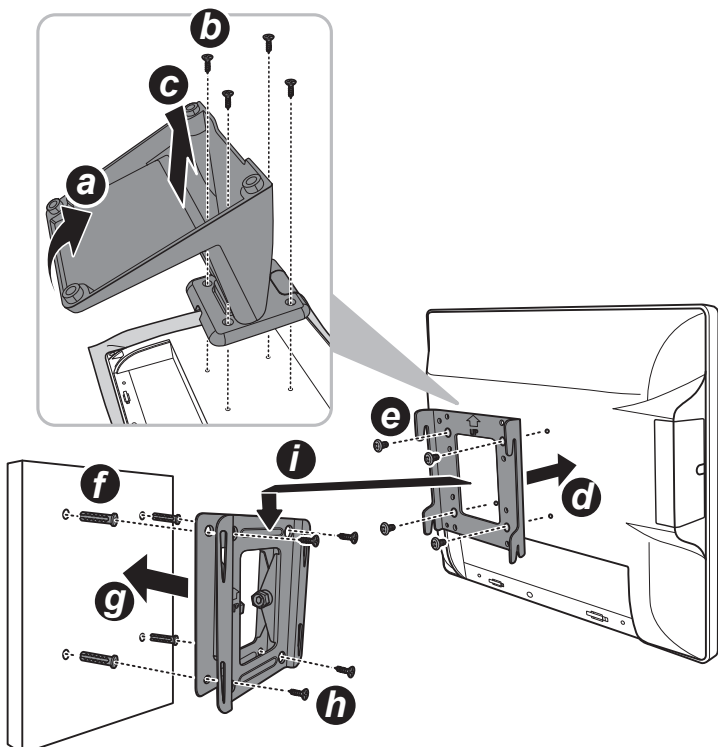
Installing the Identification Reader (Optional)

1. Remove the MSR (Magnetic Stripe Reader) compartment cover. (a)
2. Route the MSR module connector through the opening on the module. Then align an optional identification reader (Fingerprint, iButton, or RFID) with the MSR module and route its connector through the opening on the MSR module. (b)
3. Connect the MSR module connector and the optional identification reader connector to their respective connectors on the Touch Panel. (c)
4. Align by the screw holes and then install the MSR module to the Touch Terminal. (d)
5. Secure the MSR module to the Touch Terminal with the two screws. (e)
6. Align and then press firmly to attach the identification reader to the MSR module. (f)
7. Secure the identification reader to the Touch Terminal with the screw. (g)



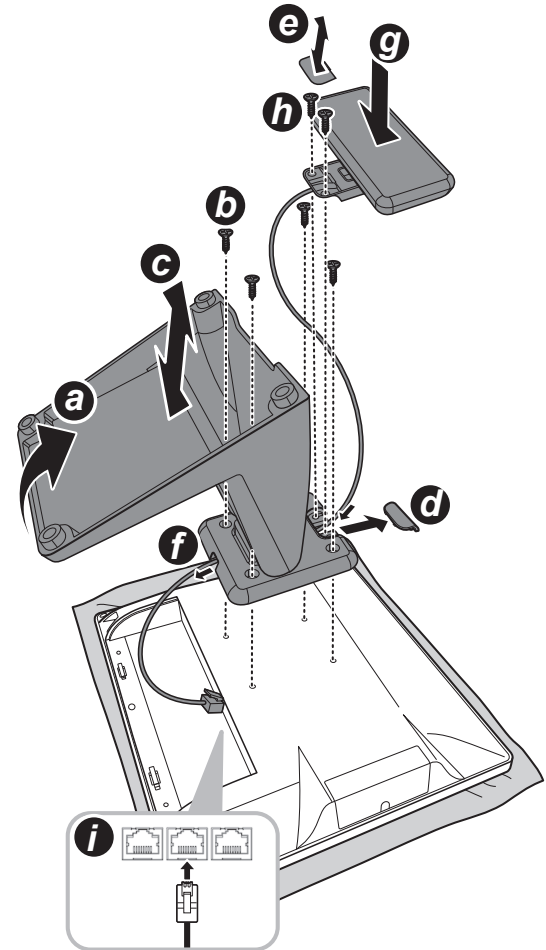
Installing the VESA Mount (Optional)

1. Place the Touch Terminal on a soft and flat surface, with the LCD panel facing down.
2. Rotate the panel stand to access the screws securing the panel stand to the Touch Terminal. (a)
3. Remove the four screws securing the panel stand to the Touch Terminal. (b)
4. Remove the panel stand. (c)
5. Align and install the mount bracket on the back of the Touch Terminal. (d)
6. Secure the mount bracket to the Touch Terminal with the four screws. (e)
7. Drill four small holes on the mounting location and insert the plastic washers into the holes. (f)
8. Align by the screw holes and then install the wall bracket on the wall. (g)
9. Secure the wall bracket to the wall with the four supplied screws. (h)
10. Align and hook the Touch Terminal to the wall bracket, and then push down to secure it into place. (i)



Installing the Customer Display (Optional)

1. Place the Touch Terminal on a soft and flat surface, with the LCD panel facing down.
2. Rotate the panel stand to access the screws securing the panel stand to the Touch Terminal. (a)
3. Remove the four screws securing the panel stand to the Touch Terminal. (b)
4. Remove the panel stand. (c)
5. Detach the VESA compartment cover. (d)
6. Detach the customer display compartment cover. (e)
7. Route the customer display cable through the cable compartment on the panel stand. (f)
8. Align and install the panel stand to the Touch Terminal. (c)
9. Secure the panel stand to the Touch Terminal with the four screws. (b)
10. Align and install the customer display into its slot on the panel stand. (g)
11. Secure the customer display to the Touch Terminal using the two screws (h)
12. Connect the customer display's interface cable to the RJ-45 COM port on the Touch Terminal. (i)



Installing the Secondary LCD Display (Optional)

1. Place the Touch Terminal on a soft and flat surface, with the LCD panel facing down.
2. Rotate the panel stand to access the screws securing the panel stand to the Touch Terminal. (a)
3. Remove the four screws securing the panel stand to the Touch Terminal. (b)
4. Remove the panel stand. (c)
5. Detach the VESA compartment cover. (d)
6. Remove the cable compartment cover on the secondary LCD display. (e)
7. Route the secondary LCD display USB Y-cable through the cable guides on the stand as illustrated. (f)
8. Align and install the panel stand to the Touch Terminal. (c)
9. Secure the panel stand to the Touch Terminal with the four screws. (b)
10. Align and install the secondary LCD display into its slot on the panel stand. (g)
11. Secure the secondary LCD display to the Touch Terminal with the two screws. (h)
12. Replace the cable compartment cover to the secondary LCD display. (e)
13. Connect the secondary LCD display's USB Y-cable to the corresponding ports on the Touch Terminal. For better brightness, suggest to plug 2 USB connectors simultaneously. (i)

