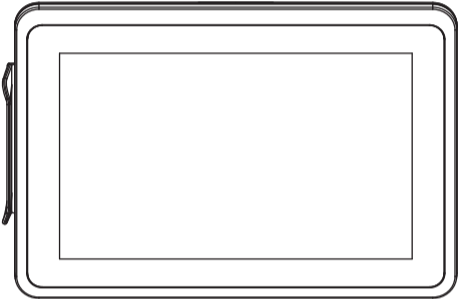
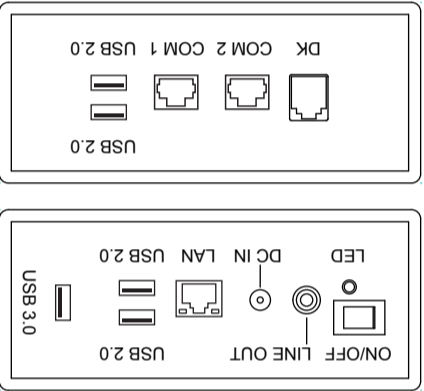




HiFive Series



Overview

ZPKMU-00186



HiFive Series

Quick Installation Guide V2.0

- Before getting started, read these instructions and save them for later reference.
- Turn off the POS Terminal before cleaning. Clean with dry cloth only. Do not spray any liquid cleaner directly on the screen.
- The power outlet socket used to plug in power cord must be located near the system and easily accessible.
- Make sure the voltage of the power source is set correctly before connecting the POS Terminal to power outlet.
- If the POS Terminal shares an extension cord with other devices, make sure the total loading of the devices plugged into the extension cord does not exceed the extension cord's maximum loading.
- Do not expose the power cord, extension cord and power outlet to moisture or traffic intensive walkways.
- Install the POS Terminal on a sturdy and reliable surface to prevent damage caused by dropping.
- The operating system must be first loaded before installing any software into the POS Terminal.
- Disconnect the power cord from the POS terminal before any installation of internal components. Make sure both the POS terminal and the external devices are turned off. A sudden surge of power may damage sensitive components.
- During installation of any internal components, be sure to ground yourself and discharge any static electricity. Most electronic components are highly sensitive to static electric charge. Use a grounding wrist strap and place all electronic components in any static-shielded devices. If a wrist-grounding strap is not available, ground yourself by touching an unpainted piece of metal.
- The brightness of the flat panel display will decrease after using over long periods of time. However, hours of use will vary depending on the application environment.
- When maintenance of the POS Terminal, make sure the LCD panel is properly and securely installed.

Warning & Attention

Technical Support

- To set CMOS default, press *F2* to enter *CMOS setting* and load optimized defaults.
- Refer to *User Manual* for other technical information and FAQs. If the problems are not resolved, contact your local vendor for further support and provide them with the information below: **product name, product serial number, and detailed description of your problem.**

Safety notices



Before You Proceed

- Read safety notice and User Manual carefully before using the product.
- Keep the box and packaging in case the product needs to be shipped in the future.
- Follow the product and warning label instructions.
- Any changes or modifications that do not follow the instructions in this manual will void this product's warranty.



Power Supply Safety Notice

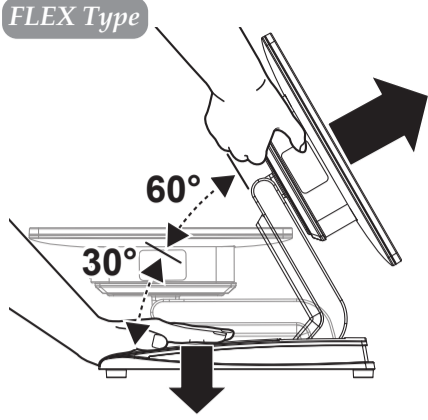
- To avoid electric shocks, disconnect the power cord from the electrical outlet before relocating the system.
- Make sure the voltage of the power outlet conforms within voltage range of the terminal. Failure to comply may cause the electric shock or damage to the terminal. If you are not sure of the electricity voltage that you are using, contact your local electricity company.
- To avoid fire or electric shocks, do not overload electric power outlets.
- Protect the power cord from being walked on or pinched particularly at plug, convenience receptacles, and the point where they exit from the apparatus.

NOTICE

The version of these drivers and manuals is subject to change without notice. For update, please contact your local agent.

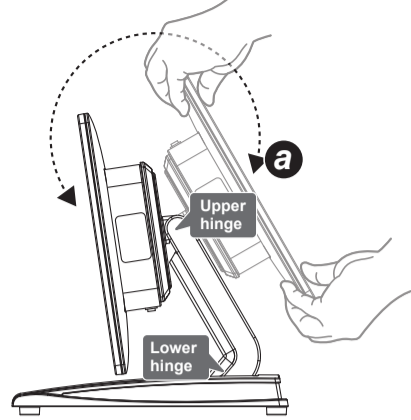
Adjust the system stand

FLEX Type



NOTE 1: Carefully tilt the unit backwards, some force is required.

NOTE 2: Lift the head to the 1st detent where the screen will lock in the 30-degree position. Then the 2nd detent will lock in 60-degree position.

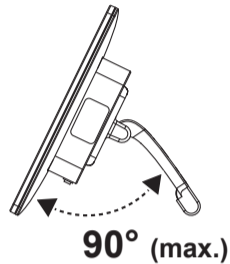


NOTE 3: Because the stand joints are tight, you might need to exert some force to maneuver the Terminal.

NOTE 4: Make sure always rotate around the head to the position "a" before adjusting the upper hinge.

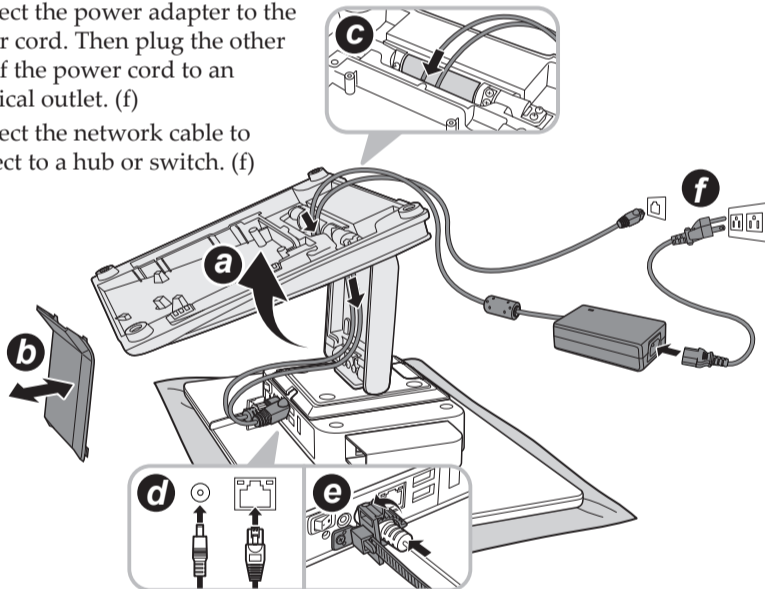
NANO Type

Extend the kickstand and place the Touch Terminal on the stable surface.



Installing the Power Cord, Power Adapter, and Network Cable

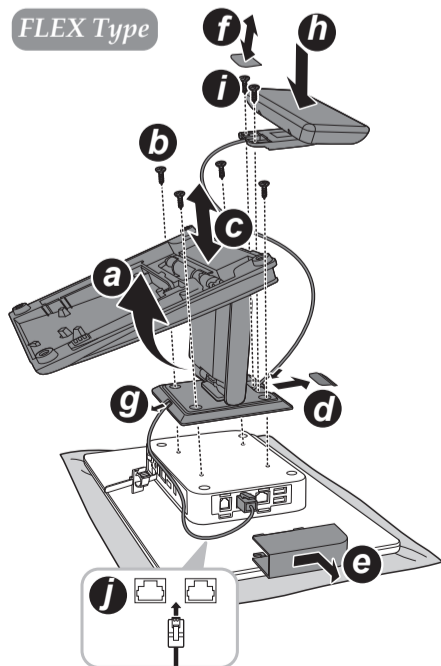
1. Place the Touch Terminal on a soft and flat surface, with the LCD panel facing down. Then push the stand upwards (a) for easy access to the cable compartment cover.
2. Remove the cable compartment cover (b).
3. Route the power adapter and the network cable through the cable compartment. (c)
4. Connect the network cable to the LAN port. Then connect the power adapter to the DC IN jack. (d)
5. Use the cable clip to secure the power adapter in place. (e)
6. Align and install the cable compartment cover. (b)
7. Connect the power adapter to the power cord. Then plug the other end of the power cord to an electrical outlet. (f)
8. Connect the network cable to connect to a hub or switch. (f)



Installing the Customer Display (Optional)

1. Place the Touch Terminal on a soft and flat surface, with the LCD panel facing down. Then push the stand upwards to access the screws securing the stand to the Touch Terminal. (a)
2. Remove the four screws securing the stand to the Touch Terminal. (b)
3. Remove the stand. (c)
4. Remove the VESA compartment cover. (d)
5. Remove the I/O port cover. (e)
6. Detach the customer display compartment cover from the customer display. (f)
7. Route the customer display cable through the cable compartment on the stand. (g)
8. Install the stand (c) and secure the stand to the Touch Terminal with the four screws (b).
9. Align and install the customer display into its slot on the stand. (h)
10. Secure the customer display to the Touch Terminal using the two screws. (i)
11. Align and install the customer display compartment cover. (f)
12. Connect the customer display cable to one of the COM ports on the Touch Terminal. (j)
13. Replace the I/O port cover.

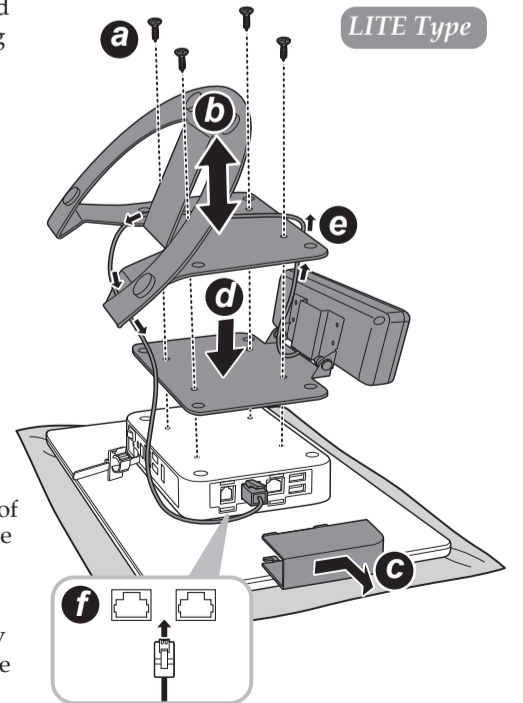
FLEX Type



Installing the Customer Display (Optional)

1. Place the Touch Terminal on a soft and flat surface, with the LCD panel facing down.
2. Remove the four screws securing the stand to the Touch Terminal. (a)
3. Remove the stand. (b)
4. Detach the I/O port cover. (c)
5. Align and place the customer display on the rear of the Touch Terminal. (d)
6. Place the stand on the top of the customer display bracket. (b)
7. Route the customer display cable as shown in the illustration. (e)
8. Connect the customer display cable to one of the COM ports on the Touch Terminal. (f)
9. Replace the I/O port cover.
10. Secure the stand and customer display bracket to the Touch Terminal with the four screws. (a)

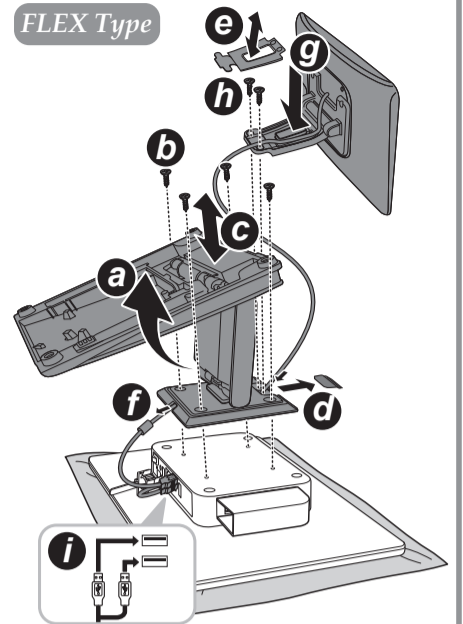
LITE Type



Installing the Secondary LCD Display (Optional)

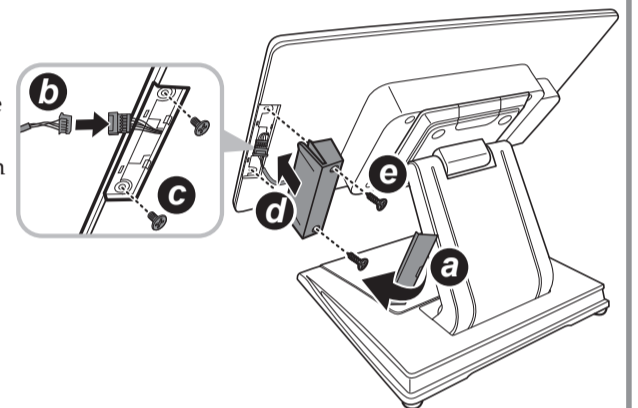
1. Place the Touch Terminal on a soft and flat surface, with the LCD panel facing down. Then push the stand upwards to access the screws securing the stand to the Touch Terminal. (a)
2. Remove the four screws securing the stand to the Touch Terminal. (b)
3. Remove the stand. (c)
4. Remove the VESA compartment cover. (d)
5. Detach the cable compartment cover from the secondary LCD display. (e)
6. Route the secondary LCD display USB Y-cable through the cable guides on the stand as illustrated. (f)
7. Install the stand (c) and secure the stand to the Touch Terminal with the four screws (b).
8. Align and install the secondary LCD display into its slot on the stand. (g)
9. Secure the secondary LCD display to the Touch Terminal with the two screws. (h)
10. Align and install the cable compartment cover. (e)
11. Connect the secondary LCD display USB Y-cable to the USB ports on Touch Terminal. (i)

FLEX Type



Installing the Identification Reader (Optional)

1. Remove the MSR (Magnetic Stripe Reader) module compartment cover. (a)
2. Firmly connect the MSR connector into the slot inside the compartment. (b)
3. Remove the two screws from the compartment. (c)
4. Align and install the MSR module onto its compartment. (d)
5. Secure the MSR module to the Touch Terminal with the two screws. (e)



Installing the VESA Mount (Optional)

1. Align and install the mount bracket on the back of the Touch Terminal. (a)
2. Secure the mount bracket to the Touch Terminal with the four screws. (b)
3. Drill four small holes on the mounting location and insert the plastic washers into the holes. (c)
4. Align by the screw holes and then install the wall bracket on the wall. (d)
5. Secure the wall bracket to the wall with the four supplied screws. (e)
6. Align and hook the Touch Terminal to the wall bracket, and then push down to secure it into place. (f)

